



The Glenfarg Newsletter

Issue 238 October 2018



Inside this issue

Tennis Finals Day - Social History Project

Stephen Hawking Stone - Book Review

Suggested Donation £1

Contents

Contacts..... 3

Editorial..... 5

Diary of Events..... 7

Arngask Church News 10

Gala Day Funds Distribution..... 12

Glenfarg Cinema..... 14

GDIB..... 16

W.R.I..... 21

Cubs & Scouts Camp..... 22

Friends Of Wallace Park..... 26

Success at Kinross Show..... 29

Death By Cliché..... 30

Book Review 32

Tennis Finals..... 34

Glenfarg History Project..... 38

Stephen Hawking Stone..... 40

Glenfarg Folk Club..... 44

Scouts Canoeing..... 46

Cake With A Story To Tell..... 48

Glenfarg CC Minutes..... 53

General Information..... 72

The views expressed by contributors to this newsletter are entirely their own. Publication within this newsletter does not imply that the Editors or Community Council agrees with, or supports, those views. The editors will not be held responsible for any factual inaccuracies, or incorrect inferences drawn.

Advertise In The Glenfarg Newsletter

You can advertise in the Newsletter for very reasonable rates as below which are annual i.e. 6 issues.

Full Page £70 per annum
Half Page £35
Quarter Page £20

Single issue advert prices available on request.
Advert enquiries should be made by initially contacting the editorial team.

Editor

newsletter@glenfarg.org
Robin Watson 830 355

Treasurer

Daniel Horsman 830 067

Distribution

Glenfarg Village Store 830 201

Cover Photograph Editor

DEADLINE FOR NEXT ISSUE

We always try our best to make sure that your newsletter is available promptly at the start of every even month. If you would like to contribute to the next issue, please inform us with details by the 1st of November to allow us adequate time to plan the issue. Contributions should reach us by 15th of November. **Thank you.**

Contacts

| Service/Organisation | Contact Name/ Email Address | Telephone |
|-------------------------------|--|-----------------|
| Community Council | Chairperson: Margaret Ponton | 830 611 |
| | Secretary: secretary@glenfarg.org | 830 817 |
| P&K Councillor | Cllrs. Barnacle, Watters, Purves and Robertson | See P&K website |
| Police | Non emergency contact number | 101 |
| | Crimestoppers | 0800 555 111 |
| Household Utilities | Scottish Water Helpline | 0800 0778 778 |
| | Scottish Hydro Electric Helpline | 0800 300 999 |
| Dog Warden | Kirsteen Mackenzie | 01738 476476 |
| PA Contact | Mark Crossey | 830 201 |
| Arngask Church | Bill Macpherson (Session Clerk) Session.Clerk@ada-church.org.uk | 830 430 |
| Arngask School | Marie Lyon (Head Teacher) | 867 250 |
| Accordion & Fiddle | Russell Robertson | 830 642 |
| Baby & Toddlers | Catherine Mason | 07583 022 608 |
| Badminton Club | Alan Clark | 830 246 |
| Dance Connect | Rachel Webb | 07760 972 359 |
| Beavers | Christine Morton | 830 210 |
| Bowling Club | William Coventry glenfargbc@gmail.com | 830 529 |
| Bridge Club | Sheila Harley | 830 319 |
| Cubs | Robert Morton robert.morton1@tesco.net | 830 210 |
| Curling - Men's | Lorne Findlay | 830 441 |

| | | |
|--|---|--------------------------------|
| Curling - Women's | Margaret Jenkins | 830 453 |
| Folk Club | David Aird | 830 370 |
| Football | Alan Fairweather | 830 851 |
| GDIB | Kate Armstrong | 830 343 |
| Glenfarg Community Cinema | Janet Watson | 830355 |
| Glenfarg Oil Buying Syndicate | Tom McAulay glenfargobs@gmail.com | 07786 705261 |
| Knit & Natter | Ineke Watt | 830 345 |
| Kinross-shire Time Exchange | Linda McKeen time-exchange@kinross.cc | 07469 758 984 07510 380 603 |
| Ladies' Badminton | Annette Eadie | 830 547 |
| Neighbourhood Watch | Linsey Penman | 830549 |
| Old Folks Association | Philip Ponton | 830 611 |
| Rainbows, Brownies & Guides | Jan Pedley glenfargbrownies@gmail.com | 830 195 |
| Red Cross | British Red Cross, Perth | 0844 412 2808 |
| Riding for the Disabled | Angela Stocks | 830 262 |
| Scouts | Robert Morton robert.morton1@tesco.net | 830 210 |
| SWI | Margaret Scott | 830369 |
| Tennis Club | Tim Corcoran tim@taraw.plus.com | 830 879 |
| Village Hall | Tanya McKibbon villagehallbookings@gmail.com | 07984 275756 |
| Website | Janet Watson <i>editor@glenfarg.org</i> | 830 355 |
| Wine Club | Steve Mee | 830 395 |
| Zumba | Gale Paterson | 07823 334 476 |

Editorial

On the front cover is a picture of Gillian Forbes cutting the lettering into the Stephen Hawking memorial stone, later to be laid in Westminster Abbey over the ashes of the famous physicist. Gillian is an example of the talented people who live in the environs of Glenfarg. Read the full story on page 40.

I spent a pleasant afternoon watching the finals of the Glenfarg tennis competition in Wallace Park. See my photographs of the event in the centre pages.

A new regular item for the newsletter is the book review. In future issues of the newsletter, various reviewers will be featured with the review of their choice of book. In this issue Mark Crossey, who had the idea, reviews the book 'Eleanor Oliphant Is Completely Fine'. The Glenfarg Gala day doesn't happen by itself. The majority of the committee who have been responsible for the running of the Gala in the past are stepping down. New members are required to plan and deliver Gala Day 2019. See details on how you can help on page 12.

Thanks to all the volunteers who turned out to help the Friends of Wallace Park in their clear-up. See the results on page 26.

In this issue we have another of the excellent entries to the short story competition. The story is 'Death By Cliché' by Alison Harrison, one of our regular contributors.

As usual thanks to all our regular contributors, including Christine Morton for all things scouting and Leigh Smith for her articles on baking.



ANDREW MILLER FIREPLACES



Bespoke & personal service

SUPPLY or SUPPLY & INSTALL

GAS / ELECTRIC / MULTIFUEL / WOODBURNING STOVES

**GLASS / GRANITE / SLATE / TILED HEARTHES TO SUIT
STOVES or FIRE SURROUNDS**

GAS / ELECTRIC / FIRES / SUITES

**LARGE SELECTION OF VARIOUS TIMBER and PAINT FINISH
FIRE SURROUNDS / BEAMS and SHELVES**

GRANITE / LIMESTONE / MARBLE / FIRE SURROUNDS

**SHOWROOM by APPOINTMENT
27-29 WESTERLOAN
MILNATHORT
KY13 9YH**

**Email: millerfireplaces@btconnect.com
Tel 01577 862173
Mobile 07870 284868**

Glenfarg Grapevine

Do you feel 'out of the loop'? Are you missing out on village news? Or are you an organiser, needing to reach as many people locally as possible?

Then you need to make use of ALL our wonderful means of communication. Please remember, these are run by volunteers. They will not copy from one medium to another - you need to make use of them all.

Community Website

www.glenfarg.org

for all the information about our village
club contacts / service dates / hall calendar / group and CC minutes etc

Facebook

join the Glenfarg Grapevine closed group
for instant community news / details of events

Email Service

sign up via the community website
to receive a weekly email of upcoming events
plus emergency announcements

Noticeboards

The shop window is the place for general posters
and the CC noticeboard (round the corner) for CC and Perth Council news

Grapevine News for Non-Computer Users

we are now posting a printout of the Grapevine Email Service
on the CC Noticeboard

Newsletter

You're already reading it!

A Village Hall for All

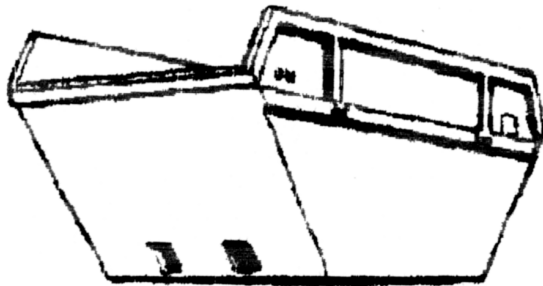
A quick guide to regular village hall activities. Does anything take your interest?

| Day | Time | Organisation |
|-----------------------------|---------------------------------|------------------------------------|
| Monday | 9.30am - 11.30am | Baby & Toddler Group |
| | 6.00pm - 7.30pm | Cubs |
| | 8.00pm - 10.00pm | Ladies' Badminton |
| Tuesday | 5.45pm - 6.45pm | Beavers |
| | 7.00pm - 8.00pm | Zumba Fitness |
| Wednesday | 6.00pm - 7.00pm | Rainbows |
| | 6.00pm - 7.30pm | Brownies |
| | 6.00pm - 8.00pm | Guides |
| | 8.00pm - 10.00pm (In winter) | Badminton |
| | 7.00pm - 11.00pm | Accordion & Fiddle Club |
| Thursday | | |
| | 7.30pm - 9.00pm | Scouts |
| 2nd Thursday Sept to May | 7.30pm | WRI |
| Friday | 10.00am - 11.00am | Chair Exercise |

To check on the Village Hall bookings, go to the village website
www.glenfarg.org
 and look at the on-line calendar under 'Hire the Hall'



Binn Skips



Binn Farm • Glenfarg • Perthshire
PH2 9PX

Tel. 01577 830 833
Fax. 01577 830 488

Church News



The Rev Susan Thorburn continues as our Locum Minister and can be contacted by Email: Minister@ada-church.org.uk or telephone 01821 642681

Our new Pastoral Team are now up and running and they can be contacted via Gill Boardman on 01738 850940

The church will be holding its annual Christmas Sale on the 24th Nov. This will be held in the Village Hall from 10 – 12, and anybody looking to make donations or help provide goods for sale, please contact Margaret Scott on 01577 830369

Reminder that the Church Hall is available for hire and enquiries should be addressed to Sheona Reid 01577 830388

For more information contact the Session Clerk,

Bill Macpherson on 01577 8730430 or Session.Clerk@ada-church.co.uk



MAKE YOUR CHILD'S DEVELOPMENT MORE FUN!

DISCOVER RUGBYTOTS

Our dynamic weekly play sessions enable **boys and girls aged 2-7** to develop their social and physical skills in a fun, positive environment.

For more details, just call or email:

0345 313 0288

samaan@rugbytots.co.uk



rugbytots.co.uk

The world's favourite rugby play programme

Silver Lining Hair Studio

Ladies, Gentlemen, Children, Students, Seniors

Bridal Hair a Speciality

Kebelo ADVANCE Specialist

Upstairs at Jamesfield Centre, (Lift available)

Perth Road, Abernethy, KY14 6EW

Telephone: 01738 851110

(Walk In Customers Welcome)

Send a message via Via Facebook or Instagram – typically replies within an hour

www.silverlininghairstudio.uk

GALA DAY FUNDS

Time has flown by since the Gala Day in June but the committee have been busy accepting and reviewing the funding applications.

We had a surplus of just over £2100.00 this year and it has been distributed to the following organisations:

1. Friends of Wallace Park
2. Glenfarg and Duncrievie in Bloom
3. Glenfarg Playgroup
4. Old Folks Association
5. Arngask School
6. Glenfarg Improvement Team

The majority of the committee, who have delivered the 'Fete' and the 'Gala Day', for a good number of years, are stepping down from the committee to make way for new younger members.



If you want a Gala Day next year, we need new members to plan and deliver GALA DAY 2019

Contact Steve 830395 or David 830370

AVON CALLING!

*37 years and still
DING DONGing in Glenfarg!*



*Many thanks to all my customers, past and present
Cosmetics, toiletries, perfume, gifts
delivered to your door*

I can deliver a brochure, or you can go to
www.janmakeup.co.uk,
place your order and choose whether to have it delivered direct
(for a small fee) or for free by me.

If you would like me to call, or for more information, contact

Jan Macpherson, Lyndhurst, Ladeside
01577 830430, 07709 015305
jan@janmakeup.co.uk

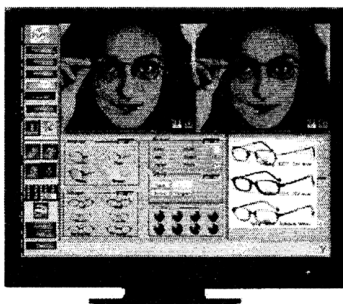
FERRIER & MACKINNON OPTOMETRISTS

74 High Street, KINROSS KY13 8AJ Tel: 01577 864 009
27/29 Chalmers Street, DUNFERMLINE KY12 8AT Tel: 01383 721 502

We are a family firm of Optometrists dedicated to professional, quality eyecare.

Introducing our new

FRAME
IMAGING
SYSTEM



SEE YOURSELF
WEARING A FRAME
BEFORE YOU
ORDER ANY
SPECTACLES!

WHY NOT POP IN FOR A
DEMONSTRATION - WE
WOULD BE PLEASED TO
SEE YOU.

Opening hours: Monday to Friday 9.00am - 5.30pm
Saturday 9.00am - 5.00pm

Glenfarg Community Cinema



It was a great start to the 2018/19 season. Nearly sixty people came along to watch *The Greatest Showman*, starring Hugh Jackman.

This year, the community cinema has changed the way it sets the programme. Our supporters were asked for suggestions of films they would like to see, and from this the committee have constructed a balanced programme. So we started off with a real 'feel good' musical, to be followed by drama, comedy and then something special for Christmas.



We also have even more of the comfy chairs, low tables, candlelight. Bring your own wine and nibbles, we'll provide the popcorn and ice cream.

Another major change was discussed at the recent AGM. Why is it that the men always seem to take care of the technology, while the women are in the kitchen preparing the teas? So this year, the women handle the technology (well done, Hazell!) and your teas and coffees are prepared and served by the men. They even did the washing up!

The Greatest Showman

We began the night with a video to give our audience the experience of performing in a circus, thanks to the tightrope walking skills of Tess Corcoran. Set to the music from the film, Tess performed on a tightrope in her garden with a variety of activities to show off her balancing skills - but she also had a GoPro camera so that the audience could see what she saw as she balanced, walked, turned, knelt, stretched on one leg and did a back-flip (no, not the last one!).

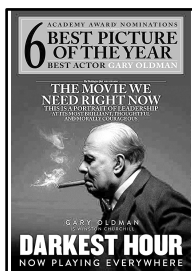
Then we settled down to watch the film. Based loosely on the life of impresario P T Barnum, I think any inaccuracies should be forgiven. After all, this is entertainment not documentary. So we were swept away by the music and dance, romance and tragedy, successes and disasters, and Barnum's final realisation that the most important thing in his life is his family. So at the end there was a cheer from our audience.

Here is how they voted.

Awful 2% OK 5% Good 15% Very Good 32% Fantastic 46%



FILMS FOR OCTOBER/NOVEMBER

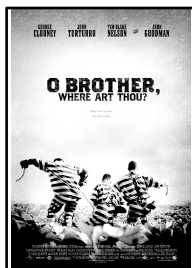


October 12th

THE DARKEST HOUR

Gary Oldman won the Oscar for his portrayal of Churchill, who in 1940 had to decide whether to negotiate with Adolf Hitler or fight on to secure freedom for Western Europe.

Drama, history, biography



November 9th

O BROTHER, WHERE ART THOU?

In the deep south during the 1930s, three escaped convicts search for hidden treasure while a relentless lawman pursues them.

Adventure, comedy, crime

Glenfarg and Duncrievie in Bloom

Well there seems to have been so much happening of late I'm having to split my article into sub sections.

1. Take a Pride in Perthshire Judging

Thank you to all who helped prepare for the actual judging and it was with a smile I noticed that we had our pavements swept by PKC the day before. The last time this was done was just before the



judging 3 years ago when we last entered the competition (other than in May this year when a group of residents decided to bombard PKC with requests). As always the judging involves making a presentation to the judges (which Donald handled wonderfully) then taking them on a tour around the village with Irene and Kate. Fortunately the weather was kind to us and Glenfarg & Duncrievie were seen at their best. The judges had a good laugh at all the flowerpot men and also had an excellent tour of the orchard and

wildflower project with Eric. (see item 7 for stop press results)

2. Open Gardens

As always the success of this biennial event depends on so many factors and GDIB have it in barrowloads with gardeners willing to show their gardens, volunteers serving cream teas, scone maker Sheona, publicity gurus and sponsors. This year we were delighted to receive donations from Sainsbury's and Morrisons of cream, jam, tea, coffee and sundries. Another first this year was the "Ask the Experts" event when fuchsia growing champions Ian Fairweather and Euna Scott were on hand, not only to show off their award winning blooms but also, to give tips on care, growing and overwintering of these beautiful plants. Unfortunately the weather wasn't great and may have affected the numbers of visitors but those who did attend were very impressed, especially the children who ended up with Harry Potter style wands curtesy of a contorted hazel in one garden plus spotting flowerpot men in others. After all expenses were taken into account the day raised just under £250 which is almost half of GDIB's insurance costs for the year.

3. Fundraising

Over a year GDIB requires to raise in the region of £1000 for insurances (£600) and everything from additional plants to vehicle maintenance. We have been so lucky to have been chosen by our shopkeepers as the beneficiary of their loose change jar and pop up pub tickets. This has made a huge difference to us but we also need to top this up with other fundraising events which are being planned as I write. Details will be on Grapevine soon.

4. Summer 2018

Yes we've all enjoyed one of the warmest summers in a long time but of course these bonny wee floral displays needed a lot more care (and water) than usual. However, thanks to that wonderful group of watering volunteers the plants flourished and survived the seriously dry spell. Slowly but surely we are trying to make the task easier for those great people by investing in more and more planters with water reservoirs which don't need daily top ups.

5. Gala Day

It's hard to credit that the Gala took place way back in June and here we are in October. As always GDIB were happy to run the plant stall and it was great to see one customer post on the Grapevine some lovely photos to show how her purchases had flourished. It's always good to hear from a satisfied customer. GDIB were delighted to be awarded funds from the Gala Committee which will be used to purchase more planters with water reservoirs, initially replacing the two at the top of Ash Grove.

6. Volunteering with GDIB

Drumming up volunteers for any cause seems to be getting harder and harder. Why? Do we have too many commitments, are we becoming more isolated and introvert or do we simply not know what is out there for us? Well GDIB can offer you fresh air, sense of achievement and worth, camaraderie, a good laugh and sometimes even a cup of coffee and a chocolate biscuit but even that doesn't seem to attract volunteers in Glenfarg. Just recently 4 tons of forest bark were delivered and required spreading in various locations in Glenfarg. On the much publicised day only 5 volunteers, with an average age of 67, turned up. Maybe next time you see a poster or e mail asking for your help ask yourself "How much longer am I going to have a bunch of pensioners do everything for me?"

7 TAPIP Judging

At the awards ceremony on 12th September GDIB were awarded a Silver Medal. Initially I think some of us were a little disappointed having achieved higher in the past. However my spirits were lifted on the 13th September when I told a Glenfarg resident the result and she replied "That's brilliant!". Yes it was brilliant and a very big Well Done to everyone who has dug, planted, trimmed, watered, grown on and all the other wee jobs that makes sure we continue to live in a lovely environment.

JAMESFIELD FARM SHOP



**CELEBRATING OVER 30 YEARS CHEMICAL FREE
FRESH FROM OUR FARM TO YOUR PLATE**

Fresh Organic Produce

Homemade Baking

Delicious Steak Pies – Can be made to order

Mr C's Traditional Award Winning Pies

Highland Drovers & Puddledub Meats

Cairn O' Mohr Wines & Organic Wines and more

Fair Trade Products & Handcrafted Gifts

**RESTAURANT WITH VIEWS OF THE TAY ESTUARY
- Try Our New Menu -**

Traditional and Delicious Home Cooked Food

Vegetarian & Vegan Food Available

Mon – Sat 9.00am – 5.00pm Sun – 10.00am – 5.00pm

Jamesfield Farm Shop and Farmhouse Kitchen

By Abernethy, Cupar, KY14 6EW

Tel: 01738 850 498 Email:

jamesfieldfarm@btconnect.com

<https://www.facebook.com/jamesfieldfarmshopandrestaurant>

www.jamesfieldfarmshopandrestaurant.co.uk





Gain a clear perspective on your financial future

Proud to support Glenfarg Tennis Club

We provide a comprehensive wealth management service, offering specialist face-to-face advice tailored to you. Our services include:

- Investment Planning
- Retirement Planning
- Inheritance Tax Planning
- Intergenerational Planning

For further details please contact:

AS Wealth Management

Mob: 07970 668515 | Email: andrew.stewart@sjpp.co.uk
www.as-wealth.co.uk

H2SJP28474 03/18

Glenfarg W.R.I.



The first of our meetings for this session was held on the 13th September.

Due to unforeseen circumstances the speaker for this meeting, Corrinne McRau was unable to make it.

Competition Winners

Small article in Patchwork--1st Jeanie Black; 2nd Helen Quartermaine; 3rd Janette Kirkland.

Fatless sponge with filling--1st Margaret Scott; 2nd Liz Yull; 3rd Alison Harrison.

Flower of the month-- 1st Allison Messenger; 2nd Sheena Chisholm; 3rd Lillias Johnston.

Dates of future meetings--Visitors welcome

11th October: Visiting institute, Sales table.

Competitions- Photograph of my garden; Individual Fruit Fool; Flower of the Month.

19th October: Beetle Drive in the village hall 7pm. Adults £3.50 Children £2. Includes Refreshments. Kids bring your Mum & Dad along to an evening of fun and Laughter.

8th November: Talk on Aloe Vera, and her visit to Kilimanjaro by Jane Sanderson.

13th December: Buffet supper & entertainment.

Scout and Cub Camp Auchengillan

The road signs said “No access to Glasgow” but we kept going as we weren’t going as far as Glasgow, only to Auchengillan. The next sign said “Road Ahead Closed” . We weren’t worried as we could see the campsite, the entrance was round the next bend as were the workers relaying the road and we had to go back and round a different route that wasn’t really suitable for the minibus or the trailer.



We were directed to camp at the site known as the bowling green and found we were sharing it with a group from Luton who had scattered their tents over most of the area. The weather was a bit miserable as we carried the kit across the site and pitched the tents but that didn’t seem to dampen the group’s spirits.

Once everything was sorted we explored the site which was much bigger than

it had appeared initially and very different with the forestry converted to small wooded areas and more activity areas. Back on our own site the two small patrols cooked the evening meal on gas much to their disappointment at not being able to cook on open fires.

The leader of the Lutton scout group, who was a Dundonian, came over to invite the scouts to join his scouts and explorers for their evening campfire. Robert set up camp golf while the scouts played bucket cricket. After a couple of rounds of golf the scouts lit a Kelly kettle to make hot chocolate.

Tuesday morning was dry and we had a great view of Dumgoyne and the Campsie Fells from our site. The first activity of the day was archery in one of



the sheds on site. The activity leader explained the rules and then encouraged everyone to shoot at the target explaining how to improve accuracy. He then divided the scouts into two teams, added a leader to each and decided to join in himself shooting left handed. Each team managed to win one of the competitions.

After lunch we headed into Glasgow to visit the museum of life. The scouts decided that the best exhibit was the ship moored to the quay as they could move the cargo around. On the way back to camp the scouts went shopping for the competition meal. It's usually the last evening meal but the European games meant the road to Glasgow from camp was going to be shut. The staff in Waitrose were very tolerant of the scouts wandering around trying to decide what to make for their meal. Suilven's patrol created a starter of oatcakes,



cream cheese topped with a cherry tomato followed by haggis, neeps and tatties. Lee's patrol made pasta with a chicken, bacon and tomato followed by raspberry cheesecake.

Wednesday morning was damp but that didn't dampen the enthusiasm for laser tag in a small wooded area. In the afternoon we drove over the newly patched road to the Whangie carpark. There were good views of Loch Lomond on the walk round into the Whangie. The scouts explored the Whangie and then

had competitions to see who could go furthest over the rock face without putting a foot on the ground. This extended into who can get the furthest along the track by only walking on the rocks.



Grass sledging was the evening activity. The scouts applied the brakes on the first run down the track, after that they decided to see who could get the furthest. The tracks ended on a counter slope to reduce the chance of anyone getting to the end. Eventually Christine had a go and being heavier got to the stop mat without difficulty.

The Allander leisure centre in Milngavie was Thursday morning's destination. The scouts stayed in the pool as long as possible. The leaders found time to try out the sauna. We had a misguided tour of the Mugdock Country Park in the minibus on the way back to camp. After lunch we had to take strike camp and pack up to return home.

Christine Morton

Friends of Wallace Park Volunteer Day



Sandwiched between days of rain, the sun shone on the Friends of Wallace Park on Saturday 11th August.

The volunteer day had been arranged to tackle a few small projects that we wanted to achieve this year. The fantastic results are there in the park for

everyone to see as well as in these photos from the day.

Two new bug hotels 'Btingham Palace' and the 'Bug Hilton' provide luxury accommodation and are welcome additions for the very smallest Glenfarg residents as autumn approaches.



The area by the noticeboard has been cleaned up as have the sundial and signs. The bush by the North West gate has been trimmed and cut back.

There are now plans for the children of the village to create a small pebble mosaic on the top wall by the two big stones. Go and see if you can find where and watch that space!

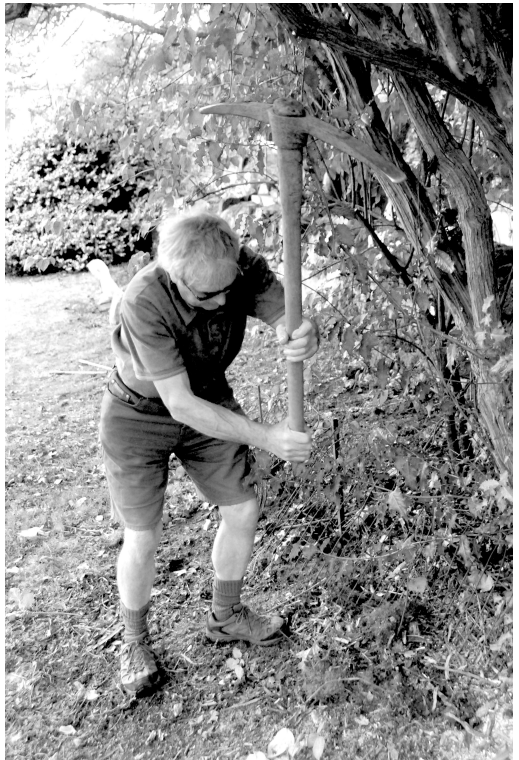
Thanks again to all the volunteers for making the day great fun and really productive. Thanks to those

who helped with the refreshments and arranged for the sun to shine. We hope to have another volunteer day again next summer. Sunshine will be guaranteed again!

The friends of Wallace Park committee will hopefully be meeting with the Council's Landscape architect team later this year to turn your ideas into a draft plan which we can then get costed and move towards seeking funding and permission for the various projects.

We will continue to keep everyone up to date through this newsletter, Grapevine and the noticeboard in the park.

Enjoy the autumn in your park.





Glenfarg Village Store

MUCH, MUCH MORE THAN JUST YOUR MORNING PAPER

**Groceries • Fruit & Veg. • Local Eggs
Fresh Bread & Morning Rolls • Chilled & Frozen Foods
Baking Goods • Hot & Cold Snacks • Cleaning Supplies
Wine, Beer & Spirits • Tobacco • E-Cigarettes
Confectionery • Pick 'n' Mix • Ice Creams • Magazines
Chemist Sundries • Gift Wrap & Greeting Cards
Stationery • Pet Products • D.I.Y.
Lottery • PayZone • Free Doggy Bags
Parcel Drop Off and Collection.**

If you're not there for us, we won't always be here for you.

Mon-Sat 7am to 7pm, Sun 9am to 7pm

Tel: (01577) 830 201

Success at the Kinross Show

At this year's Kinross Show, the Holt Brook family won first prize in the giant courgette category for a 46cm yellow courgette.

Sown as a seed by the Smallholding, Blackruthven Perth, it was brought on in their poly tunnel in Glenfarg. The children watered and fed it every day before the show but wanted it to grow even more. So they commissioned Glenfarg musician, Robin Watson, to compose some appropriate mood music which was played on a loop for the last few days. That seems to have given this courgette the edge over the other entrants - it grew the extra winning few centimetres in length rapidly, just in the last week. Weighing in at 3.190 kg, it has now been cut up and packaged in freezer bags, ultimately to make 7 courgette and lemon cakes, and 4 big panfuls of ratatouille - all from one courgette!



Also at Kinross Show, Otilie Price from Glenfarg won the 1st prize for an animal made out of junk. She made a spitting lama model, out of a bathroom spray cleaning product bottle.

Death By Cliché

At this point in time, no-one knows for sure what was going through Jack's mind in regard to the other woman – the one known as the “blonde bombshell”. At the end of the day, there's no proof that he was having an affair with her, though plenty of people said, “there's no smoke without fire”. As for those lazy, hazy days of the summer of '62, therefore, all we can do is speculate about what might have been.

Let's be clear about this, the all American boy was definitely living the American dream, if you will. I mean to say, sure as God made little green apples, it was pie in the sky for him to hope he could get away with it, without darling Jackie, not to mention the American - or the worldwide - public, finding out.

To be perfectly honest, Jack was busy from sun-up to sun-down, working all the hours God

sends, bringing home the bacon, so if you want my opinion, much of the affair would be conducted by telephone, and the calls were maybe in code. I would imagine they'd run something along these lines.

“Hello, sweetie pie. Happy birthday and many happy returns of the day. What can I get you?”

“Why, thank you kindly, Mr. President! Far be it from me to be presumptuous, but I guess everyone knows that diamonds are a girl's best friend.”

“Well, I'll see what I can do, because for my special girl, the sky's the limit.”

“Yes, and one day, there'll be a man on the moon!”

Now, Jack has gone to the big white house in the sky, where he'd have been the new kid on the block for a while, until he settled in and learned the ropes. If truth be told, he's probably happy as Larry and after all, if you ask me, there's no use crying over spilt milk



Alison Harrison



HENDERSON

PLUMBING AND HEATING

Henderson Plumbing and Heating,
based in Glenfarg, provide a professional and
reliable service.

- *Full Bathroom Renovations
- *Central Heating systems
- *Biomass systems
- *Drainage
- *General maintenance
- *Traditional Cast iron rain water gutters
- *lead work

Mobile. 07703 735925

hendersonplumbingandheating@outlook.com



The Book Review

Eleanor Oliphant Is Completely Fine by Gail Honeyman



From the first few pages of this fantastic debut novel, it becomes apparent that Eleanor is anything but completely fine, socially awkward to the point of cringe making, judgmental, dismissive, damaged and wretchedly lonely. She is also very, very funny. Eleanor works in the accounting department of a graphic design firm, never speaks unless necessary and is the subject of ridicule and gossip amongst her co-workers. She works all week and on Friday she purchases two litre bottles of vodka, a bottle of Chianti and a Tesco Pizza, spending the weekend in an alcoholic haze, in her words: “Never

drunk but never sober.” Her only friend is her pot plant, the only thing that she managed to salvage from a violent abusive relationship.

Her Wednesday mandatory phone call from mother is something to be endured. Through them, we get a glimpse of the childhood our heroine must have had.

Eleanor is one of those people who are hilarious without being aware of it. This is her drinking from her favorite mug: 'I purchased it in a charity shop some years ago, and it has a photograph of a moon-faced man. He is wearing a brown leather blouson. Along the top in a strange yellow font, it says 'Top Gear'. I don't profess to understand this mug. It holds the perfect amount of vodka, however, thereby obviating the need for frequent refills.

As the book progresses she falls madly in love with a terrible pop star, who she has never met but decided that she will marry. There follows a makeover trip to the waxing salon, hairdressers who she thanks for making her 'shiny' and clothes shopping. Both touching and funny in equal measure.

Eleanor is persuaded by her co-worker Raymond to help an old man who has fallen over in the street, and gradually gets drawn into the world of other people, and their families, slowly beginning to realise what she has missed and the life she might want to lead.

This is a very dark book in places, but the author expertly deals with the issues of depression, social isolation, mental illness and abuse without ever being sentimental or self-pitying. There is of course the obligatory twist at the end but I didn't think it was necessary, I found myself practically cheering for Eleanor, and did she get her happy ending? Of course she did. Eleanor Oliphant will defiantly be completely fine.

Mark Crossey

Tennis Finals' Day at Wallace Park



What a day we had last Saturday when Glenfarg Tennis Club celebrated its 92nd Annual Champions Day where club members play for 5 trophies; Men's and Women's singles and doubles and Mixed doubles.

After this perfect summer, we thought we were being greedy asking for one more perfect day, but our wish was granted.

From 2pm when the first battle was waged, until almost 7 o'clock when the final trophy was allotted, the sun shone and created a great day both for playing and watching.

There was no doubt who was the biggest winner on the day. Sue Knowles won the singles on her own, (beating Tara Winterton in 3 sets), won the doubles accompanied by Margaret Ponton, again beating Tara and her partner Maud Swanson, then teaming up with Ralph Hepburn to beat Margaret and Alan Clark in the mixed doubles. Well done Sue and all the other finalists. There was some really good tennis played last Saturday.

The men's champion was Andy McHardie for the third time running. He beat Alex Swanson, again the runner-up. Alex did have success in the men's doubles final though, partnering Mervyn Cooper in a titanic struggle with Alan and Chas Young. So there were some big winners, some two-time losers and some winners/losers on the day, but I don't think anyone was disappointed. We had a fabulous day and everyone has made their New Tennis Year resolutions to be at the peak of their game for the 93rd gathering.



We hope that the digging around our clubhouse has not caused too much inconvenience. This is the final acts to complete the development; the installation of a water supply and a permanent connection to the sewage system. We are deeply indebted to Stephens Homes who have done the work for us, and we would like to recognise Bruce Strachan and Hamish Mackay for all they've done for the tennis club.

In return, we have invited all the new residents of Copperfields to be members of the club as our guests for the first year they live here. Hopefully we'll have some new players and perhaps new names on the trophies next year





Glenfarg's Social History

Since Robin Watson and John Armstrong put their heads together and started compiling a Social History of Glenfarg several things

have happened. Initially some senior residents past and present were interviewed and the recorded videos shown by the Cinema Club in addition to a compilation of old postcards with their messages from a hundred years ago voiced over by Janet Watson and John.



The advent of the Coffee Lounge in the hall has provided the

opportunity to showcase some of the old photos acquired by John from former resident Willie Reid, who visited the Lounge recently and was delighted to see the start of a full exhibition. More of that later.

Word is spreading and several residents have started to provide old photos and family records that are being scanned and archived. Bill Macpherson has been having great fun working through a treasure of material supplied by Stewart Smith. However one of the more recent acquisitions was provided by Margie Davidson and shows the First Aid cup winning Glenfarg youngsters of the early 50s. It would be wonderful to speak with some of them - where are they now?



Back - Anne Simon, Norma Brunton, Nancy Reid, Ann Deas
Middle -David Ramsay, Elizabeth Bennett, John Stronach
Front - Lawrence Bryce, Hamish Bryce, Jean Murphy
with the Muir Cup and the Haggart Cup.

Another lady in the village has provided us with more photographic memories but before I reveal her identity, here is one of her photos. The two young girls are still in the village. Their mum, whom many of you will recognise from this picture, sadly passed away recently. So who are they? Answers and a lot more on Glenfarg's Social History in your next newsletter.

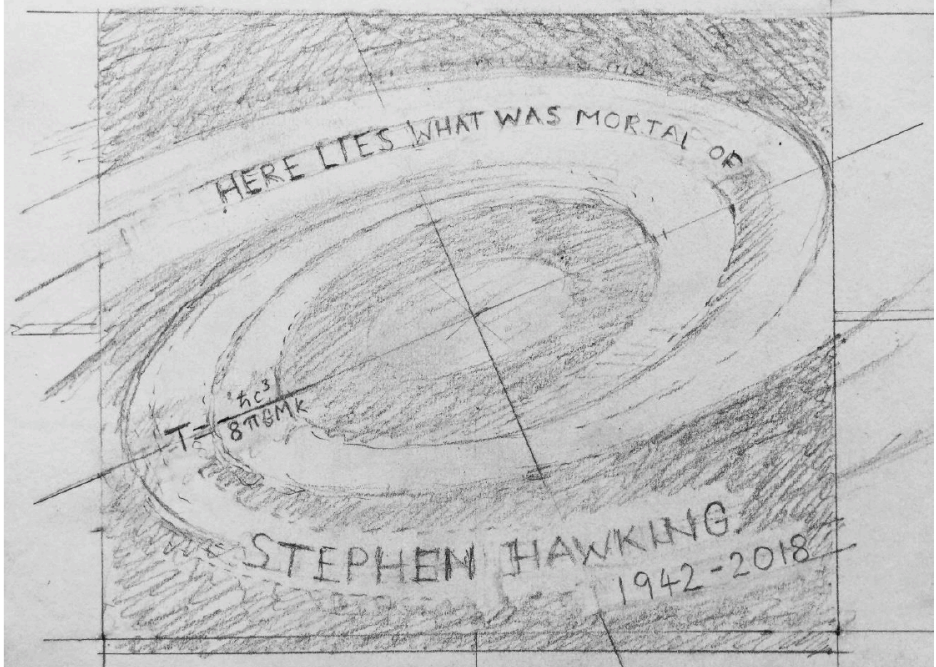


Stephen Hawking Stone

If you were watching the news last June, you could have seen a piece on the memorial service in Westminster Abbey for distinguished scientist Stephen Hawking. It all might have seemed a long way away, but did you know that the beautiful stone laid over his ashes within the abbey had been part created by an artist from the Glenfarg area?

The commission to design the stone memorial was given to John Maine, a sculptor from Wiltshire. However, he needed someone to carve the letters for him. When working on the SAS memorial in Hereford Cathedral he had collaborated with Gillian Forbes from Path of Condie. Gillian had cut the letters and carved the SAS insignia, so she was the obvious choice to work with him on the Stephen Hawking's memorial.

Here is how John Maine describes his design -



"My design for the Hawking memorial began with a feeling of deep space where a series of shapes whirl around a central ellipse, a black hole. I chose Caithness slate because it can be light when carved or sawn but very dark when honed or polished. The centre became black, surrounded by drifts of lighter carved texture. Two intersecting lines are the coordinates of the ellipse, and refer to the dimensions of space and time. As a memorial to a remarkable man it was important to balance the need for stillness with a sense of energy.

The inscription echoes the Latin text of Isaac Newton's stone

HIC DEPOSITUM EST QUOD MORTALE FUIT ISAACI NEWTONI

The translation became:

HERE LIES WHAT WAS MORTAL OF STEPHEN HAWKING

Hawking's famous equation is also inscribed on his memorial.

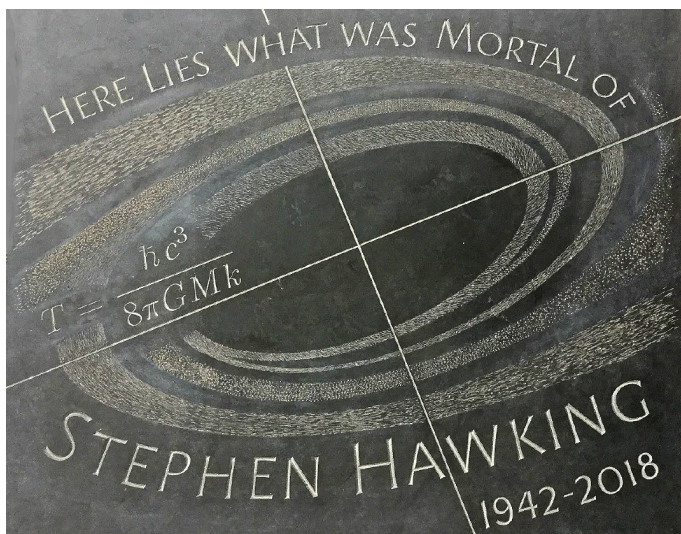
I set out the main inscription in two lines to form part of the encircling shape. The font is simple but each letter needed slight distortion to create the sense of flow. By contrast, the complex equation is cut in a distinct font reproduced from scientific documents, and lies on the axis through the stone.

First the Caithness slab was sawn and the surface prepared in Aberdeenshire for Fyfe Glenrock.

Next the stone was sent to Gillian Forbes in Perth for the inscription to be cut. She faithfully reproduced the size and position of the inscription, according to my overall drawing and gave life and character to the simple letters as she cut them with great skill.

The slab was then returned to Aberdeenshire, where I added the lines and cut the areas of texture to complete the work.

The stone was transported to Westminster Abbey where it was set into the nave floor over the ashes of Stephen Hawking after a moving service on 15 June 2018 ." John Maine RA 23/7/2018.



Gillian describes herself as a stonecarver and some of the distinguished commissions she has undertaken include the lettered panels on Canongate Wall, Scottish Parliament; Glamis Castle lions; and the Flood Prevention Scheme, Tay street carvings, Perth. At present she is carving hieroglyphics in granite and limestone for the National Museum of Scotland.



Gillian and family are moving into Treetops in Melville Terrace at the start of October and she will be renting a small workshop nearby. Gillian says "I'll be undertaking my usual commissions of memorials, house signs and carvings once we've settled into Glenfarg. We're really looking forward to our new life in the village!"



Photograph Anthony Wakefield

Glenfarg Folk Club



DARIA KULESH AND TRISTAN SEUME

Monday 1st Oct Members £6, Non-members £9

A very different and intriguing gig on offer tonight when we host two hugely interesting artistes who are now joined in an exciting new collaboration. Daria is a beautiful singer/songwriter with Russian and Ingush roots and Tristan is one of the UK's leading young acoustic guitarists. Great songs and instrumentation on offer tonight.

SINGAROUND Monday 8th Oct All £2

Autumn in Scotland means colours so, once again, "Colours" it is folks.

FINDLAY NAPIER Monday 15th Oct Members £6, Non-members £9

Having seen and heard Findlay at the Club on a number of occasions with his various bands such as The Bar Room Mountaineers, it is with pleasure that he returns tonight as a solo performer.

HANNAH RARITY AND INNES WHITE

Monday 22nd Oct Members £6, Non-members £9

A warm welcome awaits two of Scotland's finest young musicians. Hannah, the winner of the Young Trad 2018 award, has a beautiful crystal clear voice, and she will be accompanied tonight by Innes, a young man already very well respected in the Scottish folk world for his guitarist skills. Great to see such young artistes at Backstage.

SINGAROUND Monday 29th Oct All £2

As we look forward to our Club Weekend Away in the Highlands, our theme for tonight has to be "Beautiful Scotland". All welcome as always.

MAURICE DICKSON Monday 5th Nov Members £6, Non-members £9

No introduction necessary for one of the Club's firm favourite singer/songwriters. Maurice has been entertaining us at the Club and at our Folk Feasts for many years and continues to display his brilliant vocals and guitar genius.

SANDY WATT QUAICH Monday 12th Nov All £2

The Club's own annual song competition in which the aim of the performers is to provide a high degree of pure entertainment for the audience. So come and sing to make us laugh with joy or cry with despair.

THE TEACUPS Monday 19th Nov Members £6, Non-members £9

Having entertained us royally in May 2016, we had to have these brilliant youngsters back. The quartet's enthusiasm, energy and beautiful harmonies have ensured their continuing success throughout the UK folk circuit. Welcome back Rosie Calvert, Alex Cumming, Will Finn and Kate Locksley - The Teacups.

SINGAROUND

Monday 26th Nov All £2

Started your Christmas shopping yet? With that in mind, money, or the lack of it, has to be in everyone's thoughts. Our theme for tonight is, therefore, "Money/Poverty". As a financial incentive, the best song on theme will have his/her entry fee refunded - the compere's decision will be final!



Earnside

***U.K. & Continental
Travel***

Tel: 01577 830360

E mail: info@earnside.com

Website: www.earnside.com

Cub and Beavers Barrwood Camp



This year the cubs and beavers had a joint camp at the Barrwood during the summer holidays. We were the only group camping on the 96 acre site and the participants spent the early afternoon discovering just how big it was as they explored it, communicating with the other group by using radios. The cubs and beavers also learnt to take time, speak clearly and identify yourself while using the radio or no one could understand what you were saying.

The cubs and beavers pitched their own tents with a little help from the leaders, passing elements of their outdoor awards in the process. Lunch was a bit too adventurous as the wasps were attracted to the rolls the boys made, especially the ones covered in jam. Unfortunately everyone called Fraser got stung.

Caving was the late afternoon activity and Kalian who hadn't been very keen on the caving last year was desperate to lead the way through the tunnels. Even





Sadie managed to crawl through one of the tunnels.

Once clean from the caving complex, the cubs and beavers gathered wood while some of the leaders moved the equipment needed for cooking the evening meal to a different site with only an occasional wasp. The boys managed to light the fires with the third match and as everything was so dry soon had a blaze suitable for cooking. Findley and James cooked chicken curry and the leaders heated up the nan breads while the boys sorted themselves out for the evening meal.

All the boys helped to do the washing and drying, putting the plates and cutlery into the patrol boxes and leaving the clean frying pans propped against the end of the boxes.

After two games of Switzerland the cubs and beavers had a campfire, finishing the evening by toasting marshmallows on the fire. The leaders went to bed not very long after the cubs and beavers.

Following flag break on Sunday morning the boys lit the fires and Max, Fraser and Tom cooked breakfast, sausage, bacon and beans. Again all the boys helped with the washing up before returning to our own site to take down the tents and carry the kit to the trailer. James and Kalian were invested as cubs at the end of camp. As we left, Fraser was telling us what he wants to do at the cub and beaver camp next year.

Christine Morton

LEIGH SMITH CAKES



Bespoke Cakes with a 'Wow' Factor



View cakes and cupcake bouquets at
www.leighsmithcakes.co.uk and on
Facebook 'Leigh Smith Cakes'

To avoid disappointment, please allow at least one month's notice for celebration cakes, although I will always try to accommodate requests where possible.

The Spinney, Duncrievie Road, Glenfarg

Tel: 01577 830256 Email: info@leighsmithcakes.co.uk

07814 239142

A WEDDING CAKE WITH A STORY TO TELL



One of this summer's wedding cakes had a very personal story behind it. It's not the most beautiful, elegant or prettiest wedding cake I've ever made but it held so much meaning for the couple that it felt like a very special design to be involved with. Here it is sitting in my kitchen ready to go off to Fingask Castle.

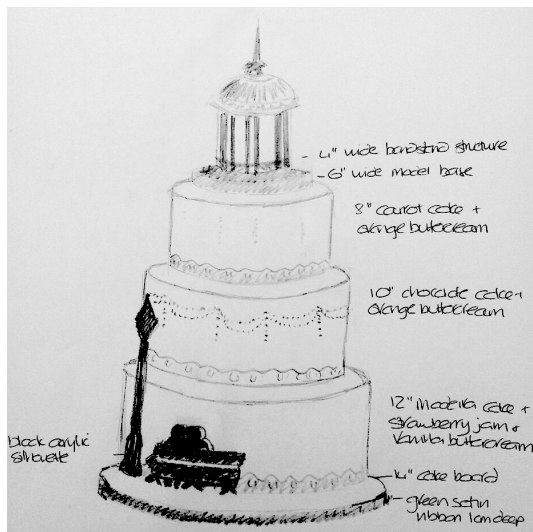
Becky and Ewan's cake was based on the story of their wedding proposal. This had taken place on a park bench right next to the bandstand on Clapham Common in London. The couple even had a photo of the proposal to show me when they came to discuss their cake. The photo had been taken from a

short distance away, somewhere behind the park bench.

When they came to me for their cake consultation, they'd travelled up from their home in London, and I knew that they were visiting other cake makers on their trip. This certainly added to the pressure and I had to think really quickly to come up with a unique design that would appeal to them over other design ideas they might have seen.

After hearing the story of the proposal, and their love for the bandstand (the largest in London, apparently) and their desire to incorporate the story into the wedding cake design, my mind was then set to work. I had to come up with something meaningful, that contained the main elements of their story and that was practical to achieve in cake form.

Here's the design sketch that I prepared for the couple which helped win the order for the cake:



The shape of a bandstand suggested to me that it would be ideally suited to being the cake 'topper', especially with the domed roof and a spire on top. There also needed to be a Victorian feel in terms of the decoration and colours used for the cake itself. I also felt that the park bench was really important to Becky and Ewan as well, not the easiest thing to create out of icing.

The solution was to have a silhouette created of the park bench with the couple sitting together. Becky and Ewan also suggested having another silhouette alongside of an old-fashioned street lamp.

A cake business called 'The Cake Guru' in Broughty Ferry manufacture cake decorations, like toppers, from acrylic so this would give a lovely black, shiny silhouette for the couple on the bench and the street lamp with nice clean lines that could lean against the bottom tier of the cake, and which the bride and groom would be able to keep as a souvenir of their big day.

To create the images for the silhouettes, I sent a copy of the couple's proposal photo to an artist friend of mine. She prepared a drawing for the couple to



approve before I sent it off to The Cake Guru to be produced.

I also wanted the couple to be able to keep the bandstand cake topper. Instead of cake, the bandstand shape was actually a polystyrene 'cake dummy' that would normally have been used to create a small birdcage. With the domed top, it was the perfect shape on which to model a bandstand made of icing. The intricate fencing around the edge was made using a 'cake lace' technique – I never thought I'd be using this for a bandstand! The red columns were created using a modelling

clay extruder which is a lot easier and neater than trying to roll thin sausage shapes from icing.

The piping on the middle tier was a 'swag' design. I don't do a lot of piping and I was relieved that a few weeks beforehand I'd found out about a new gadget that helps you mark out a pattern of dots onto icing before it sets hard, you simply pipe icing over the dots which gives a neat, regular pattern. I used dark red and green icing to echo the colours of the bandstand.

In the next issue I'll tell you about the consultation where I spoke to the bride-to-be in her pyjamas, whose cake was one of two wedding cakes I had made and which took more hours to make than any other cake I've made so far.

Building & Repairs

Woodmarch Kinnesswood

Phone: 0798 374 2524

buildingandrepairs@gmail.com

www.buildingandrepairs.co.uk

- Roof Repairs
- Flat Roofs
- Slating
- Rhones/Guttering
- Down Pipes
- Skews
- Chimneys
- Brickwork
- Plastering
- Cornices
- Cementwork
- Ceilings
- Fascias
- Stoves
- Fireplaces
- Stonework

All Work By Apprenticeship Served, Experienced and Insured Tradesmen.

Give your feet a Treat



Private podiatry/chiropractic in
the comfort of your own
home.

H.P.C. Registered

Lisa Allison BSc Tel 01577 830678

GLENFARG COMMUNITY COUNCIL

Monday 3rd September 2018
Glenfarg Village Hall

PRESENT: CCllrs Ponton (Chair), Horsman, Loudon, Pilmer, Watson,

Also present: Cllrs Purves & Robertson , and 1 member of public

APOLOGIES: Cllr Watters, CCllrs Hesar, Mcleish, Taylor.

1. MINUTES OF THE LAST MEETING:

Minutes of the previous meeting were agreed and signed.
Proposed CCllr Pilmer, seconded CCllr Loudon.

2. ACTION POINT UPDATES:

An update on action points from the previous meeting were reported as follows –

Phonebox: ongoing

Liability Insurance for Defib: ongoing

Fly Tipping: CCllr Ponton has spoken to Bridge of Earn CC, as the tipping is occurring in their area. She has also spoken to the landowner, who said that this had happened before and he put it in the hands of the police.

Marquee: CCllr Pilmer reported that John Burlison has agreed to accommodate the marquee short term (maximum one year). There is also an awning, a basketball hoop and a noticeboard to be removed. This needs to happen by the third week of



We don't just sell you a stove
We offer you a lifestyle...

STOVES

All the main manufacturers of stoves are available and we can source almost any stove. To mention just a few Charnwood, Stovax, Hunter, Di Lusso, Firefox, Adura, Arrow. Pop in to the showroom and see the stoves up close.

SPARES

Replacement Glass, Firebricks, Rope seals and Spare Parts are all available and can be fitted by our trained engineers in your home. Flexible liners (15 yr guarantee) and chimney systems available for the self-installers.

INSTALLATION

Our Hetas trained engineers can fit the stove of your choice after carrying out a FREE site survey. You don't have to buy a stove from us. We can fit your own stove - subject to suitability. All building works carried out by our tradesmen.

FUEL SUPPLIES

We stock kiln-dried hardwood logs (<20% moisture) supplied in handy nets or in bulk from our specially designed tipper trailer. Kiln dried kindling and eco-logs (briquettes) made from hardwood supplied in 10kg bags. Delivery service available.

Showroom & Workshop 62 Muirs - Kinross KY13 8AU

Tel: 01577 330526 Mob: 07885 722125

W: www.stovestuff.scot

E: craig@stovestuff.scot



FOR A FREE
SURVEY CALL
US TODAY

September. CCllr Ponton suggested that, in the spring, we should erect the marquee to assess its condition with a view to selling it.

VAS: PKC has received no objections to a VAS being sited at Duncrervie and installation is to go ahead.

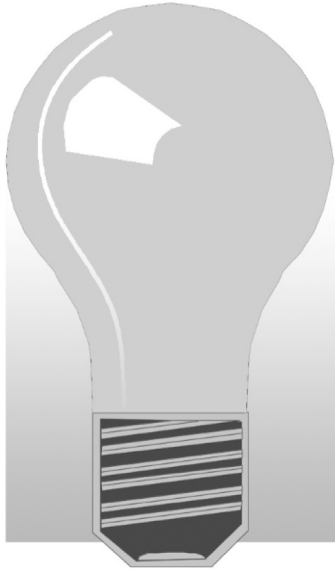
Tayside Valuation Board: The Chair of Glenfarg In Bloom has informed us that the land on which the GDIB shed sits belongs to PKC so no payment should be due.

Scottish Funds: The joint CCs request to this fund was unsuccessful.

Verge Cutting: CCllr Watson had written to Roads Dept, requesting that the St Andrews junction should be moved up the grass-cutting schedule as vehicles exited the motorway at high speed and drivers needed a clear sight. This had been passed to Greenspace but no response had been received. Cllr Robertson to pursue.

Kinross-shire Forum: CCllrs Pilmer and Taylor attended a meeting of this group on 13th August. Two main points on the Agenda for the evening were the project for the Kinross and Milnathort new traffic model and the Local Development Plan 2 (LDP2).

The K&M project covered expected traffic increase, project amendments/solutions for improved traffic flow at junctions in the two areas and the Milnathort – Stirling road junction upgrade (circa £12m). What could be implemented in the future is the improved traffic flow whilst the upgraded junction is a major topic



John Allison

(electrician)

*'Ardblair', East Blair,
Glenfarg, Perth PH2 9QL*

Tel: 01577 830 678

Mobile: 07717 791 484

Email: johnwallison@btinternet.com

All types of electrical work undertaken

Also:

Oil and gas central heating faults ~ Telephones
Computer network cabling ~ TV aerials and
distribution ~ Satellite re-alignment, alterations and
distribution ~ Wall mounted TVs installed

FREE ESTIMATES/ADVICE

that would sit with the Scottish Government.

LDP2 was discussed with regard to amendments proposed by PKC Cllrs, groups/public bodies and persons. The details were looked at, discussed and with the outcome that the proposed LDP2 was to go forward to a full PKC Cllrs meeting.

Subsequently, this PKC meeting has taken place as confirmed recently by PKC Cllr Purves. Cllr Purves stated further that a number of proposals relating to Kinross-shire had been accepted with the LDP2 now being moved on to the next stage of implementation.

Note that for Glenfarg's ward there was nothing of significance as stated previously.

3. MATTERS ARISING (not covered on the Agenda)

Open Ditch : The ditch along the old path at the bottom of Stephens field has been causing concern. The pipe through which the Eden turns the corner in that area is therefore to be opened up. This should improve the flow and solve the situation.

Lochelbank Wind Farm Community Fund:

Grant request from Bridge of Earn Bowling Club awarded for upgrade to property.

Grant request from Strathallan Canoe Club awarded that in some part will help fund this project to establish a training facility on the River Earn. PKC Planning has approved the proposed construction on the river bank at BoE.

Arngask Old Graveyard Preservation Group initiated an interest in acquiring funding however, this will be discussed at the next

ALPHAVET VETERINARY CENTRE

39 High Street, Kinross, KY13 8AA

For a caring professional service for all domestic pets



TELEPHONE 01577 863 328

E-MAIL: alphavet@alphavet.co.uk

WEBSITE: www.alphavet.co.uk

Scotland's 1st Veterinary Practice Website!

Consultations by appointment

Monday to Friday 9.00am to 12.00 noon
and 4.00pm to 6.00pm

Saturday 9.00am to 12.00 noon

Reception is open: Monday to Friday 8.30am to 6.30pm
and Saturday 9.00am to 12.00 noon



***For our 24-hour Emergency Service
please telephone 01577 863 328***



THE BEAUTY BARN

Beauty Salon situated upstairs at Jamesfield Farm Shop. Offering a range of treatments at affordable prices, great views of the Tay Estuary, café restaurant and free parking available.

Please call or message to book an appointment.

07939876428

BY APPOINTMENT ONLY

www.thebeauty-barn.com

www.facebook.com/thebeautybarnscotland

Jamesfield Farm Shop, Nr Abernethy,
Fife, KY14 6EW

meeting in November.

Grant applications deadline for the year ending 2018 is the 11th September. Should there be any project within the area that wishes to be considered, for funds in excess of £250, then a speedy response should be initiated by any interested party via www.foundationscotland.org.uk

Other small projects/initiatives can be awarded through the GCC's Micro grant facility up to a value of £250. CCllr Horsman reported that the CC has applied for the next Micro grant allocation.

4. PLANNING REPORT

CCllr Pilmer reported as follows

Applications

No reports

Decisions

18/00689/FLL

Erection of plastics processing facility and associated works, Waste Recycling Centre, Binn Farm, Glenfarg PH2 9PX.

Status: Approved.

18/00842/FLL

Change of use and alterations to steading to form extension to dwellinghouse, Easter Deuglie, Glenfarg PH2 9QJ

Status: Approved.

18/00845/FLL

Erection of 2no. dwellinghouses and a garage, Land 40 Metres

YOUR LOCAL PLUMBER

**NO CALL OUT CHARGE - NO JOB TOO SMALL
DISCOUNT FOR SENIOR CITIZENS**

- Boilers - New Installations, Repairs and Servicing (OIL, NG & LPG) & Landlords Safety Certificates
- Bathrooms - New Installations, Upgrades & Shower Repairs
- Central Heating - Radiator valves repaired & replaced, system descale & flush, new radiator installations, Under floor heating, Fitting of gas hobs & cookers
- Dripping Taps - Outside Taps - Plumbing in washing machines & dishwashers - Toilet Repairs - Drains etc



**DOUGLAS MILLER
01577 861623**



Stewart Funeral Directors

14 High Street, KINROSS KY13 8AN
Tel. (01577) 864607



**Modern Hygienic Preparation Room
Private Family Viewing Suite
24 Hour Personal Service
Specialist Ambulance Transfers
Funeral Planning Consultations
Memorial Sales by Regency Memorials**

24 Hour Emergency Service Tel. (01577) 864607

South East Of Solbacken, Church Brae, Glenfarg
Status: Approved.

18/00900/FLL

Erection of a dwellinghouse, Land 70 Metres North West of
Katiesdyke, Newfargie, Glenfarg. Status: Approved.

18/01043/FLL

Change of use of public road turning area to form private access,
extension to dwellinghouse and erection of a garage. 15 Elm
Row, Glenfarg PH2 9PQ.
Status: Approved.

18/01160/FLL

Alterations and extension to dwellinghouse, Edenhead, Main
Street, Glenfarg PH2 9NY Status: Approved.

Other

Planning Development, PKC, contacted the Secretary in relation
to an Appeal for a development, status: refused, for land 100
Metres North West Of Glendy Steading, Glenfarg. To date the
Secretary has not received any further communication about an
outcome.

5. POLICE REPORT

No police were present. A lack of police presence at CC
meetings in the last few months is causing concern. The reason
for this is to be investigated.

CCLlr Pilmer



**AVAILABLE 7 DAYS A WEEK
LOCAL RELIABLE PROFESSIONAL
SPEEDY SERVICE FOR EMERGENCIES**

All pests professionally dealt with
Free Surveys Fully Insured
Domestic Commercial Agricultural
Contract work or One-off visits

rats • mice • moles • rabbits • rabbit fencing
bird-proofing • birds • bird-clearance • squirrels
moths • flies • fleas • bedbugs • ants • wasps
spiders • insect infestations • all other problem pests

Call us to sort out your pest problem

01738 81 37 51

07767 35 35 35

www.andylawpestcontrol.co.uk



6. TREASURER'S REPORT:

CCLr Horsman had supplied a Treasurer's Report as follows.

1. GCC – BALANCE ON ACCOUNT £584.09

Income – Nil

Expenditures – GCC Hall Rental £12

2. GCC NEWSLETTER ACCOUNT – BALANCE £ 11,475.40

This balance is made up as follows :

| | Newsletter | Microgrant | Nursing Fund |
|------------------------------|-----------------|--------------|-----------------|
| | | £ | £ |
| At 9 th July 2018 | 7,452.74 | 50.66 | 4,011.00 |
| Income | 125.00 | Nil | Nil |
| Expenditures/payments | 148.00 | 16.00 | Nil |
| | <u>7,429.74</u> | <u>34.66</u> | <u>4,011.00</u> |

Newsletter:

Income – Newsletter shop tin and Advertisers £128.20

Expenditures – Newsletter Printing £148

Microgrant:

Income – Nil

Expenditures – FoWP £16.00

3. SCHOOL FUND £241

J. Stewart & Son

Landscaping and Paving



Landscaping and Ground Works



Ask about turfing

ALL WORK IS CARRIED OUT BY TRAINED CRAFTSMEN
AND IS FULLY GUARANTEED

Call for a **FREE** no obligation estimate

Tel: 01738 245465
Mob: 07516 595192

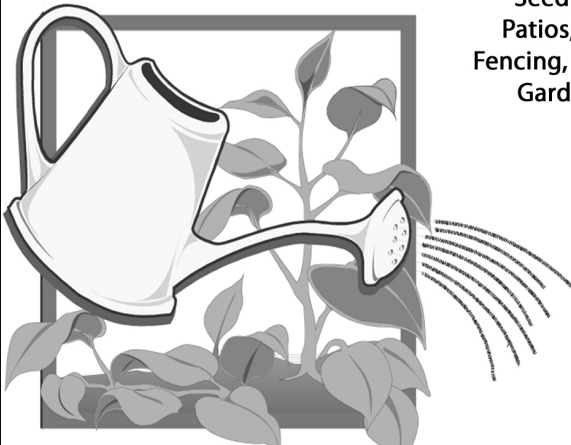
Quality just can't get any better!

LANDSCAPING & DRIVEWAYS
Monoblock • Stone Paving
Slabbing • Decking
Sandstone Walls • Re-rendered
Drainage • Gravel • Cobbles
Heritage • Cotswold Drives
Patios & Paths • Parking Areas
Land Engineering
Tidying and Full Garden Service
Tree Surgery

Brian Todd Landscapes

1 Ash Grove, Glenfarg

Contact: 01577 830 728
or 07718 916 318



Seeding, Wall Pointing, Repairs,
Patios, Driveways, Hedge Cutting,
Fencing, Gutters cleaned and repaired,
Garden Maintenance, Slabbing
& all other odd jobs

FREE
ESTIMATES
COMPETITIVE
RATES

No Transactions

TOTAL FUNDS HELD £12,300.49 at 3rd September 2018

7. AOCB:

Mound of Earth in Wallace Park: It was noted that the mound of earth covering the new sewage pipe connection to Duncricvie Road was extremely high – higher than the existing wall. It had been explained by Stephens that the pipe *'must have the final section flowing through gravity to the sewer. Our connection to the sewer where it comes into the park was therefore actually above the existing ground level of the park and we have to ensure that this pipe has 900mm of cover, therefore the requirement for a larger mound.'* The Planning Imposition Officer has been in discussion with the developer about the profile of the ground and landscaping required. He will also be seeking the reinstatement of the stone dyke crown and the grass verge to the road side.

It was agreed to arrange an on-site meeting with the developer and PKC to discuss the issue. Our local councillors would wish to attend, if possible. CCllr Watson

A member of the public brought up the maintenance of the nearby woodland and it was felt this could be added to the discussion. Tractor speed through the village: CCllr Ponton reported that she had received complaints about the speed of tractors along Main Street, which even caused some windows to rattle. A resident who had indicated to a driver to slow down had received abuse. In the past, the CC has written to all farmers about this issue. It was felt that this particular complaint could not be pursued until the farm involved was identified. Cllr Robertson suggested that defects in



TYREFAIR LIMITED

Unit 11
Bridgend Industrial Estate
Kinross

There is now a specialist tyre and battery dealer in Kinross that opens every day of the week, and has tyres and batteries at prices to suit your budget. **TYREFAIR** is a family business, with staff that have many years of professional experience in the tyre trade, and you can find them at **Unit 11, Bridgend Industrial Estate, or telephone on KINROSS 865656**. **TYREFAIR** welcomes trade account and offers the following goods and services:

- New tyres for cars and vans
- Guaranteed re-treaded tyres
- 4x4 tyres for business and leisure
- High performance tyre specialists
- Wheel alignment
- Top brand quality batteries
- Puncture and Vulcanised repairs
- Number plates made while-you-wait

TYREFAIR has a comfortable lounge, where you can relax while the work is carried out and you can rest assured that we will treat your vehicle with the care and respect that you demand.

WHY NOT CALL IN, OR TELEPHONE NOW FOR MORE INFORMATION?

KINROSS (01577) 865 656

A vertical rectangular advertisement with a black background at the top and a white background at the bottom. The top section features a white iron icon above the text 'KEEP CALM I'LL DO THE IRONING' in white, bold, sans-serif font. The bottom section has a white background with the name 'Sophie Dingle' in a black, cursive font, followed by the phone number '07786 245 800' and the location 'Glenfarg, Perthshire' in a black, sans-serif font. At the bottom, it says '24 - 48hr Turn around' and 'Free collection and delivery minimum order £8' in a black, sans-serif font. The entire advertisement is framed by a decorative border of horizontal and vertical lines.

A logo for Woodlands Bed and Breakfast, featuring a stylized tree with a branch extending to the right. An owl is perched on the branch, looking towards the left. The logo is enclosed in a circular frame.

Woodlands Bed and Breakfast

Church Brae, Glenfarg

www.woodlands-bandb.co.uk

Off Church Brae at end of lane below church

Ample car parking.

Two double bedrooms with king size beds

Resident's lounge

To book phone Cedric or Heather Wilkins

01577 830300

the road could cause vibration in houses and, if this was the case, the Roads Dept should be contacted. *CCllr Ponton*

Binn Lorries: CClr Loudon asked about large lorries heading through the village to the Binn site. It was confirmed that wherever possible lorries should approach this site from the north.

Skip at Duncreevie: This skip has now been sited near Calford Brae for over a year and appears to be used for commercial refuse. It is not known who is renting the skip. Letters written by CClr Pilmer to the Binn Group and to SEPA have received no reply. A member of the public suggested that an item in the local press could achieve a result.

Friends of Wallace Park: CClr Watson asked for clarification on overall responsibility for the park, especially when applying for funds or asking for work to be carried out. It was agreed that the CC would keep overall responsibility, as FOWP was a temporary organisation formed to carry through the developments requested by the community.

Field Next To Stephens Woodland: A member of the public asked about the management of this field, but the owner was not known.

Soak-away on Duncreevie Road: A member of the public reminded the CC that this was to be inspected. It is believed that this was added to the schedule but, as no update has been received, Cllr Robertson is to pursue.

Additional Green Routes: CClr Loudon asked about progress and Cllrs informed us that this is still to come to committee.

**The next meeting of the Community Council
will be held on 5th November, 7.30 in the Village Hall**

THINK-A-HEAD Hairdresser

Hairdressing done in the comfort
of your own home by an
experienced stylist

**Cut & Blow Dry
Tint, Foil Highlights
Perms**

**Special Rates for
OAPs and children**

Call Elaine on 01577 840043



For all aspects of
PIANO TUNING
and repair
David R. Watt
(01577 830 345)

Genuine Hardwood logs by
the trailer-load or part load.
Logs cut, split and delivered
to suit individual needs.

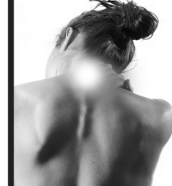
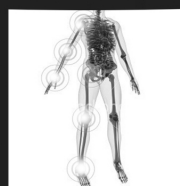


For further
details ring
Ewan
Cheape
Glenfarg
830 349

KINROSS Physiotherapy



- **SPRAINS/STRAINS/TEARS**
- **LOWBACK/NECK PAIN**
- **HIP/KNEE/ARM PAIN**
- **GOLFER/TENNIS ELBOW**
- **TENDON INJURIES**
- **ARTHRITIS**
- **TMJ (JAW PAIN)**
- **POST FRACTURE OR DISLOCATION**
- **REHABILITATION FOLLOWING SURGERY**



OPENING TIMES

**MON - FRI
10am - 9pm**

**37 New Road, Milnathort
Kinross KY13 9XT**

**01577 864875
07912 100 845**

enquiries@kinrossphysiotherapy.co.uk



ELSTON (Est. 1983) LANDSCAPES

Landscaping & Stump Grinding

TREE STUMP REMOVAL SPECIALISTS

Tree and shrub planting

Seeding & Turfing

Paths, Patios & Driveways

Hedge Cutting, Pruning and Tree Surgery

Fencing, Trellis & Pergolas

Garden Drainage

Operated Mini Digger, Dumper & Turf Lifter For Hire

01738 850 742

keith@elston-landscapes.co.uk

www.elston-landscapes.co.uk

Fully Qualified & Insured



AUSTIN HEATING & ELECTRICAL

Boiler Servicing and Repairs - OIL, GAS, LPG & ELECTRIC

Aga / Rayburn Servicing & Repairs (Rayburn Guild Engineer)



Registered
Business



Call - 07786 705261 or 01577 861188
No Call-Out Charge

www.austinheat.co.uk



VETERINARY SURGEONS

CAMERON & GREIG MRCVS

'Ardmhor', Stirling Road, Milnathort KY13 9XR



By appointment only

Monday - Friday

9 - 10.00am

2 - 3.00pm

6 - 7.00pm

Saturday

9 - 10.00am



Telephone: Kinross 863 494
Website: www.cameronandgreigvets.co.uk

Large and small animals
24-hr emergency service

General Information

Doctors' Surgeries

Loch Leven Health Centre, Muirs, Kinross - **01577 862 112**

Daytime emergency number - **01577 865 252** - NHS 24 Out of Hours - **111**

The Surgery, Main Street, Bridge of Earn - **01738 812 000**

Library



The van visits the village and stops at Main Street on every other Tuesday from 12 to 1pm

Bank Of Scotland

Stops at Glenfarg Hotel Wednesday 10.05am -10.15am



Mobile Post Office

Stops outside the Joiner's workshop, Ladeside

Mon 11am-12noon;

Wed 11am-12noon;

Tues 12.45pm- 2.15pm;

Fri 12.45pm - 2.15pm



Recycling Points

Glenfarg: Arngask School car park for cans, paper and glass

Kinross: Causeway Car Park, Sainsbury's, Station Road, for cans, glass, paper and textiles.

Bridgend Industrial Estate Open Mon-Fri 9am-7pm, Sat-Sun 9am-5pm

Milnathort: Thistle Inn, Black Loan for cans, glass and paper

Orwell & Portmoak Church Office for cans, plastic, paper and ink cartridges

Perth: Tesco, Edinburgh Road for cans, glass, paper, textiles and books

Kerbside Recycling Service: Waste Collection Dates

Glenfarg

Green lidded bin (Non-recyclable waste)

Fridays: October 12th & 26th, November 9th & 23rd

Blue lidded bin (Paper, cardboard, cans, plastic)

Fridays: October 5th & 19th, November 2nd, 16th & 30th

Brown lidded bin (Garden & food waste)

Thursdays: October 11th & 25th, November 8th & 22nd

Duncricvie

Green lidded bin (Non-recyclable waste)

Thursdays: October 11th & 25th, November 8th & 22nd

Blue lidded bin (Paper, cardboard, cans, plastic)

Thursdays: October 4th & 18th, November 1st, 15th & 29th

Brown lidded bin (Garden & food waste)

Saturdays: October 13th & 27th, November 10th & 24th

